



**THE HEART
OF IT ALL™**

Ohio.org



**Department of
Education &
Workforce**

Teams Live Event - Reminders

Attendee microphones are muted.

Submit questions in the Q&A.

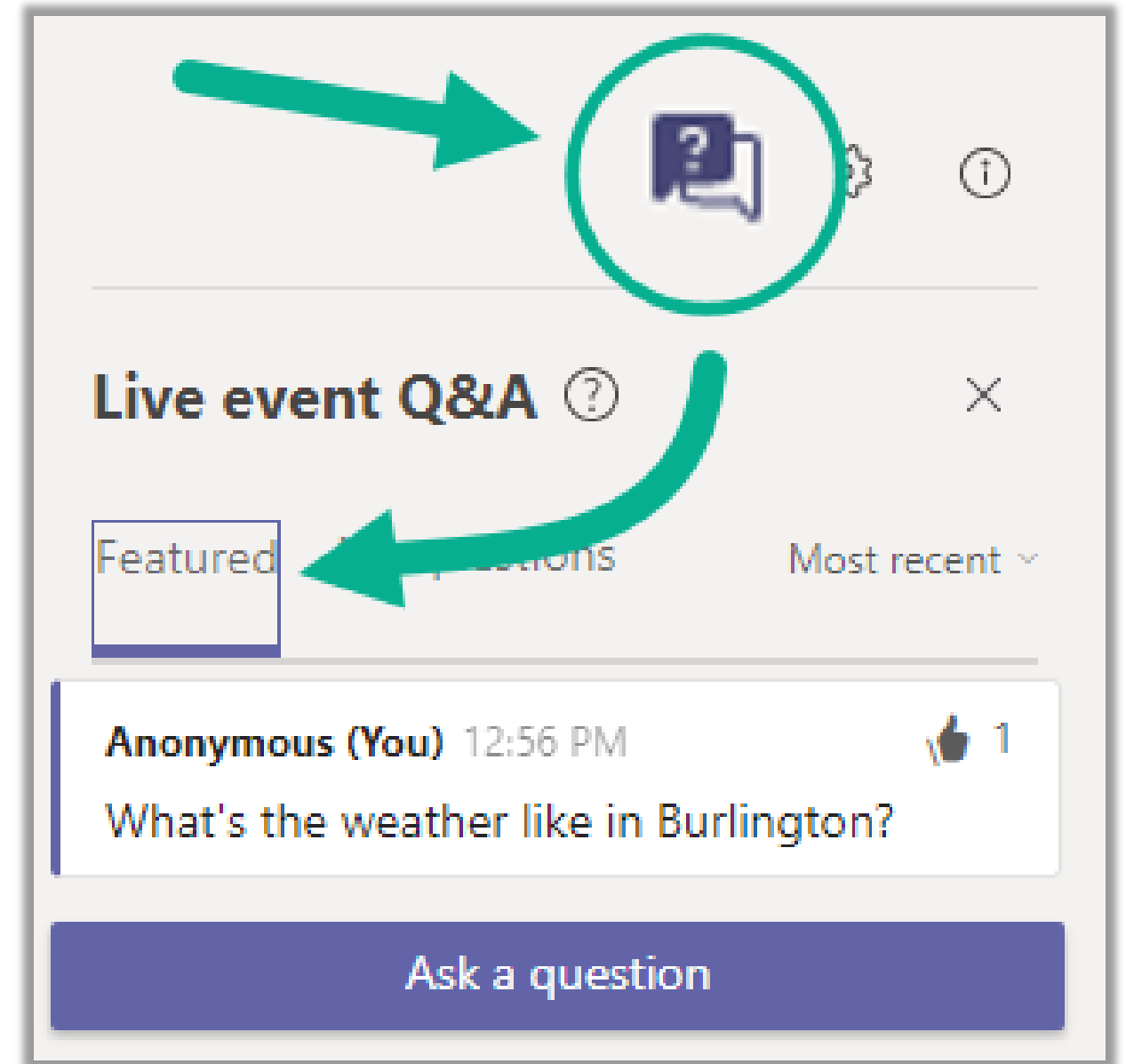
Live stream is delayed 20-30 seconds.



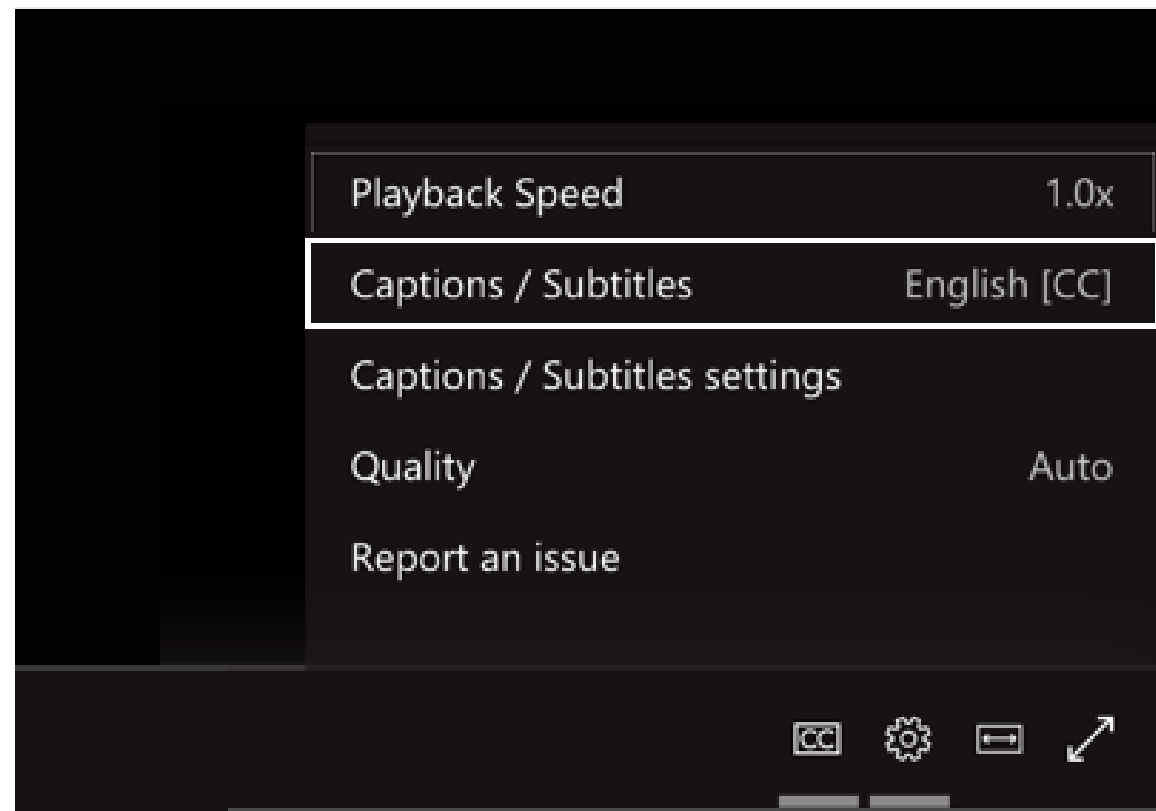
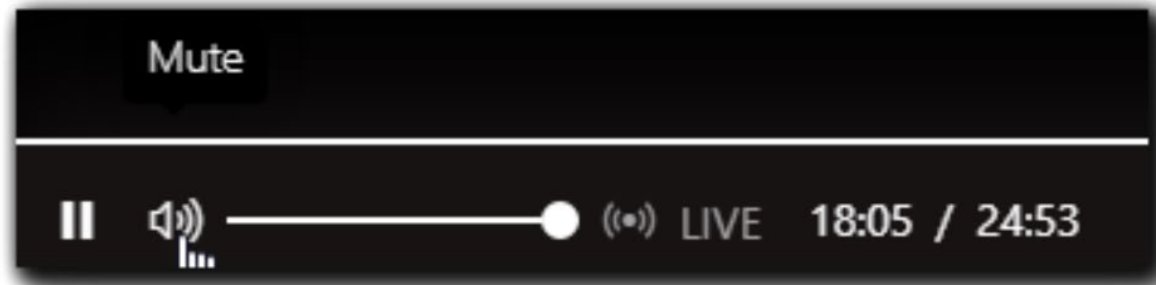
Teams Live Event – Q & A Feature

Attendees can submit questions to presenters while the Q&A chat is open.

Presenters can reply privately or feature questions and answers for all to see.



Teams Live Event – Attendee Controls



Pause	Pause the action.
Volume and Mute	Adjust the sound.
Live	After pausing, click “Live” to jump forward to the live stream.
Timer	Indicates where attendee’s stream is versus the live event.

To turn on live captions and subtitles, select **Captions/Subtitles On**  in your video controls.

Teams Live Event – Assistance



If you need assistance during the webinar,
please contact:

ohiomeetings@cambiumassessment.com

Ohio Help Desk

1-877-231-7809

Option 5

Webinar Announcements

1. Links to the [webinar materials](#) are Ohio's English Language Proficiency Tests portal.

2. The webinar is being recorded and will be available on the test portal.

3. Complete the post-webinar evaluation to receive a certificate of attendance.



**QR Code to
Alt-OELPA Webinar
Resources**

Alternate Ohio English Language Proficiency Assessment (Alt-OELPA)

Spring 2024 Administration

David Brauer
Katelynn Crow
Office of Assessment

2024 Alt-OELPA Webinar
December 13, 2023



**Department of
Education &
Workforce**



Today's Topics

1. Alt-OELPA Overview

2. Results of the 2023 Alt-OELPA

3. Preparing to Administer the Alt-OELPA

4. Questions and Answers

1

Alt-OELPA Overview



Ohio's Learning Standards – Extended
English Language Proficiency

JUNE 2021

Ohio's Learning Standards-Extended
for English Language Proficiency

Definition of English Learner with the Most Significant Cognitive Disabilities



Student is an identified English learner



Student has a most significant cognitive disability per state guidance



Student's IEP team determines an alternate assessment is appropriate

Alt-OELPA Participation Considerations

English learner in grades K-2 and
English learner new to U.S. schools

Has significant
cognitive disability
with significant
delays in adaptive
behavior and
cognitive
functioning

Requires intensive
and extensive
individualized
instruction and
substantial supports
to access curriculum

Cannot access the
general OELPA with
available
accommodations

IEP team
considered
unintended
consequences

Alt-OELPA Participation Considerations (cont.)

English learner in grades 3-12

Participates in Ohio's
AASCD

Cannot access
general OELPA
with available
accommodations

IEP team
considered
unintended
consequences

Participation in Ohio's AASCD is determined by IEP teams using the [Alternate Assessment Participation Decision-Making Tool](#).

Alt-OELPA

General Information

Four domain tests: reading, writing, listening, speaking

One warm-up item and 10 scored items per domain test

Individual administration with familiar test administrator(s)

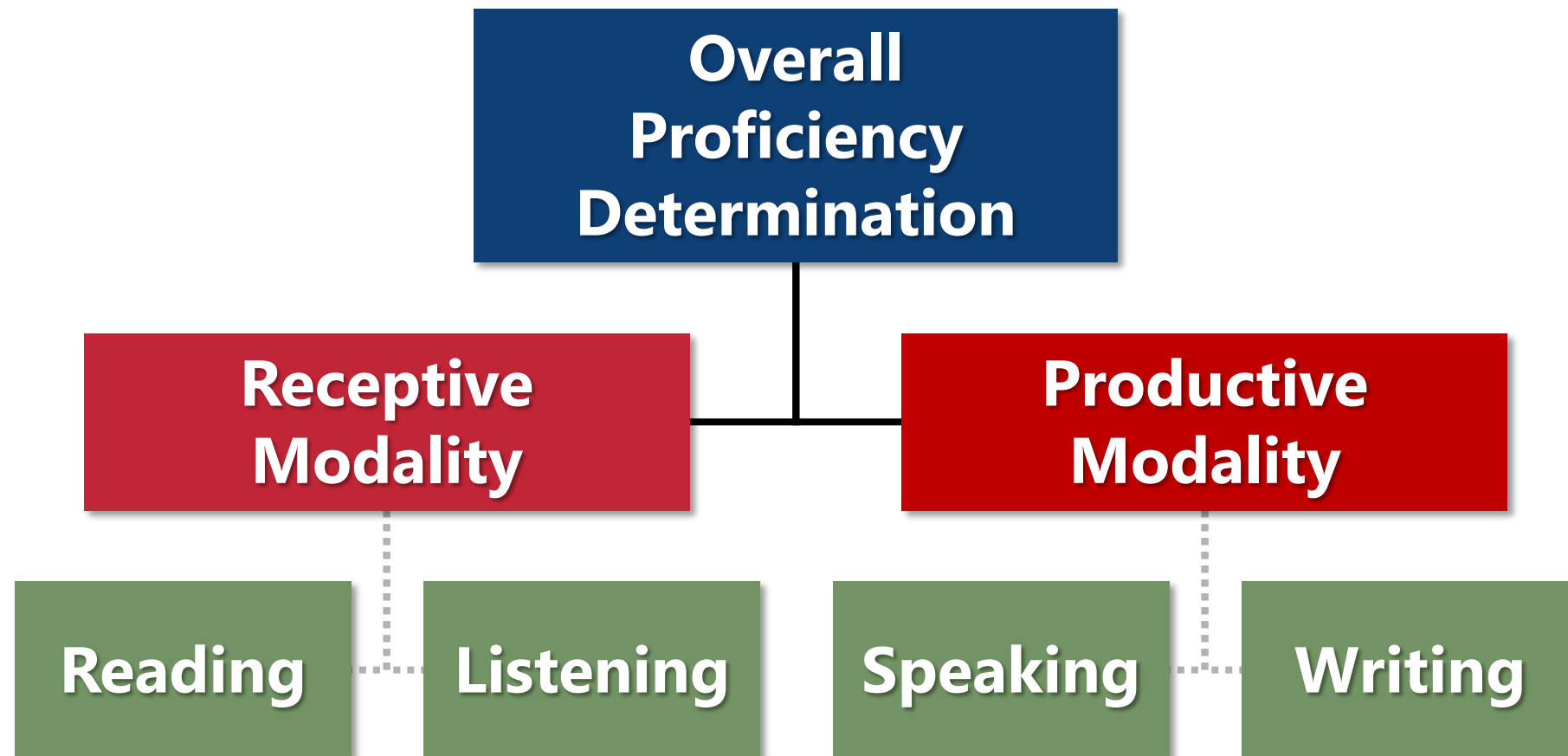
Online test, with print-on-request if marked in settings

Written and spoken responses scored locally

Student response check and early stopping rule



Alt-OELPA Performance Levels



Overall Proficiency Determination

- 1 – Emerging
- 2 – Progressing
- 3 – Proficient

Modality and Domain Performance Levels

- 1 – Beginning
- 2 – Intermediate
- 3 – Early Advanced
- 4 – Advanced

Alt-OELPA: Overall Proficiency Determinations

Overall Proficiency Determination	Modality Profile	Description	Status
Proficient	Level 3 or higher in both modalities	<i>Full or slightly limited participation</i>	Exits English learner status
Progressing	Above Level 1 and below Level 3 in at least one modality	<i>Moderately limited participation</i>	Continues as English learner
Emerging	Level 1 in both modalities	<i>Significantly limited participation</i>	Continues as English learner



2

Results of the
2023 Alt-OELPA

Alt-OELPA Reporting Resources

Alt-ELPA
Alternate English Language Proficiency Assessment

Ohio | Department of Education

Understanding Alt-OELPA Student Reports: A Quick Guide for Educators

Alternate Ohio English Language Proficiency Assessment (Alt-OELPA)
Published October 2023

**Quick Guide
for Educators**

Alt-ELPA
Alternate English Language Proficiency Assessment

Ohio | Department of Education

Alt-OELPA Reporting Performance Level Descriptors (PLDs) Kindergarten - Listening

Level 1: Beginning Score Range: 0 to 61	Level 2: Intermediate Score Range: 62 to 70	Level 3: Early Advanced Score Range: 71 to 82	Level 4: Advanced Score Range: 83 to 99
Students in Level 1 typically can show comprehension by:	Students in Level 2 typically can show comprehension by:	Students in Level 3 typically can show comprehension by:	Students in Level 4 typically can show comprehension by:
<ul style="list-style-type: none"> Identifying a few key words from read-alouds and oral presentations Recognizing the meaning of a few frequently occurring words in simple oral presentations and read-alouds about familiar topics, experiences, or events Listening with limited participation in short conversations Responding to simple yes/no questions about familiar topics Recognizing information from experience or from a provided source 	<ul style="list-style-type: none"> Identifying some key words from read-alouds and oral presentations Recognizing the meaning of some familiar, concrete words in simple oral presentations and read-alouds about familiar topics, experiences, or events Listening with some participation in short conversations Responding to simple yes/no questions and wh- questions about familiar topics 	<ul style="list-style-type: none"> Identifying key words and main topics from read-alouds and oral presentations Determining the meaning of a few novel words and a few abstract words and phrases occurring in simple oral presentations and read-alouds about familiar topics, experiences, or events Listening with some participation in short conversations Responding to simple yes/no questions and wh- questions about familiar topics 	<ul style="list-style-type: none"> Answering questions about key details from read-alouds and oral presentations Retelling basic information from read-alouds and oral presentations Answering simple questions to help determine the meaning of some frequently occurring words and phrases in simple oral presentations and read-alouds about familiar topics, experiences, or events Participating in short conversations and

**Performance Level
Descriptors**

[Link to Alt-OELPA Reporting Resources](#)

Ohio | Department of Education

PARENT GUIDE TO THE ALT-OELPA STUDENT REPORTS HOW DID MY CHILD PERFORM ON THE ALT-OELPA SUMMATIVE THIS YEAR?

After taking the Alt-OELPA, your child will receive an Individual Student Report (ISR) with a proficiency determination and three types of numerical scale scores. This guide will explain the proficiency determination and the numerical scale scores and provide guidance on the type of language supports your child will need next year.

Proficiency Determination
The box below explains each of the levels of English language proficiency—this is your child's proficiency determination. This score is based on the overall scale score, explained below, and your child's grade level.

Proficiency Determination

Proficient – Students show a level of English language proficiency reflected in the Alternate ELP standards that enables full participation or only slightly limits participation in the grade-appropriate classroom activities reflected in the Alternate Academic standards. This is indicated on the Alt-OELPA by attaining Level 3 or higher in all modalities. Once proficient on Alt-OELPA, students may be considered for reclassification.

Progressing – Students show a level of English language proficiency reflected in the Alternate ELP standards that moderately limits participation in the grade-appropriate classroom activities reflected in the Alternate Academic standards. This is indicated on the Alt-OELPA by attaining above Level 1 and below Level 3 in at least one modality. Students scoring Progressing on the Alt-OELPA are eligible for ongoing program support.

Emerging – Students show a level of English language proficiency reflected in the Alternate ELP standards that significantly limits participation in the grade-appropriate classroom activities reflected in the Alternate Academic standards. This is indicated on the Alt-OELPA by attaining Level 1 in all modalities. Students scoring Emerging on the Alt-OELPA are eligible for ongoing program support.

Overall Scale Score Overall Scale Score: 150

This three-digit score is calculated based on how well your child performed overall on the Alt-OELPA. The calculation includes performance results from all four domains (Speaking, Writing, Listening, Reading). If your child was exempted from a domain, the Overall Scale Score is calculated based on results from only the domains assigned to your child.

Comprehension Scale Score Comprehension Scale Score: 165

The Comprehension Scale Score is found on the Individual Student Report following the Overall Scale Score. This score is also a three-digit scale score. It represents how well your child comprehends English based on their performance in the Listening and Reading domains of the Alt-OELPA. If your child was exempted from either of the comprehension domains (Listening and Reading), the score is calculated from only the domains assigned to your child.

HOW CAN THESE RESULTS BE USED?

The results will be used, along with other information, to help teachers identify students who need additional support in each language area. Modality and domain scores for individual students may suggest areas of strength and areas in need of additional support or instruction and may provide additional information to guide instruction. The information also will be used to measure how well schools and school systems are helping English learners with the most significant cognitive disabilities.

www.elpa.ohio.gov

**Parent
Guides**

Alt-OELPA Results File Layout

For at least the 2023 and 2024 results, the Alt-OELPA results will be reported using the:

[Alt-OELPA – Default CRS
Layout for
Combined Data File](#)

[Alt-OELPA - Default CRS
Layout for
Data File for Each Test](#)

From the Student Results Generator, generate output to the “Data File for Each Test” layout to view domain sub scores.

[Read the Announcement
on the Ohio English Language
Proficiency Tests portal.](#)

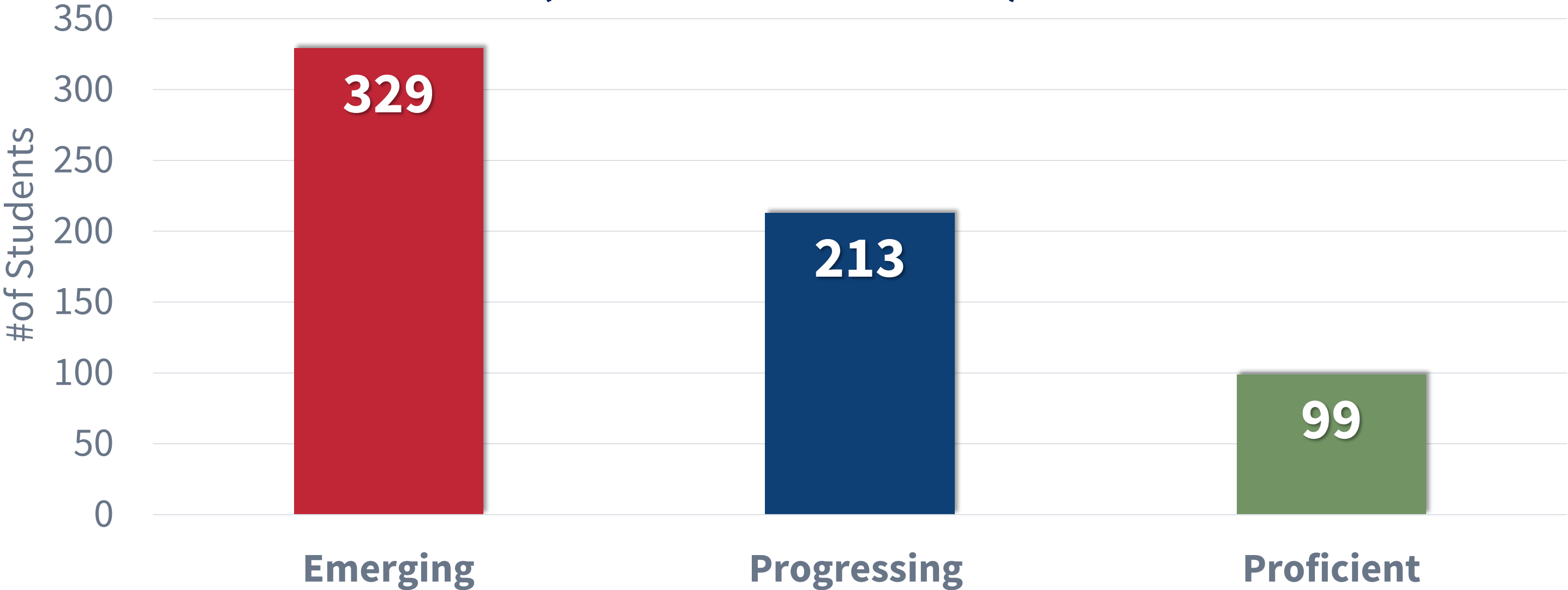


“Data File for Each Test” Layout: Columns N-AB

N	O	P	Q	R	S	T	U
Alt-OELPA Overall Scale Score	Alt-OELPA Comprehension Scale Score	Alt-OELPA Proficiency Determination	1. Modality: Productive (Speaking & Writing) Scale Score	1. Modality: Productive (Speaking & Writing) Performance	1a. Domain: Speaking Scale Score	1a. Domain: Speaking Performance	1b. Domain: Writing Scale Score

V	W	X	Y	Z	AA	AB
1b. Domain: Writing Performance	2. Modality: Receptive (Listening & Reading) Scale Score	2. Modality: Receptive (Listening & Reading) Performance	2a. Domain: Listening Scale Score	2a. Domain: Listening Performance	2b. Domain: Reading Scale Score	2b. Domain: Reading Performance

Statewide Alt-OELPA Results by Overall Proficiency Determination, 2023 (Number of Students)

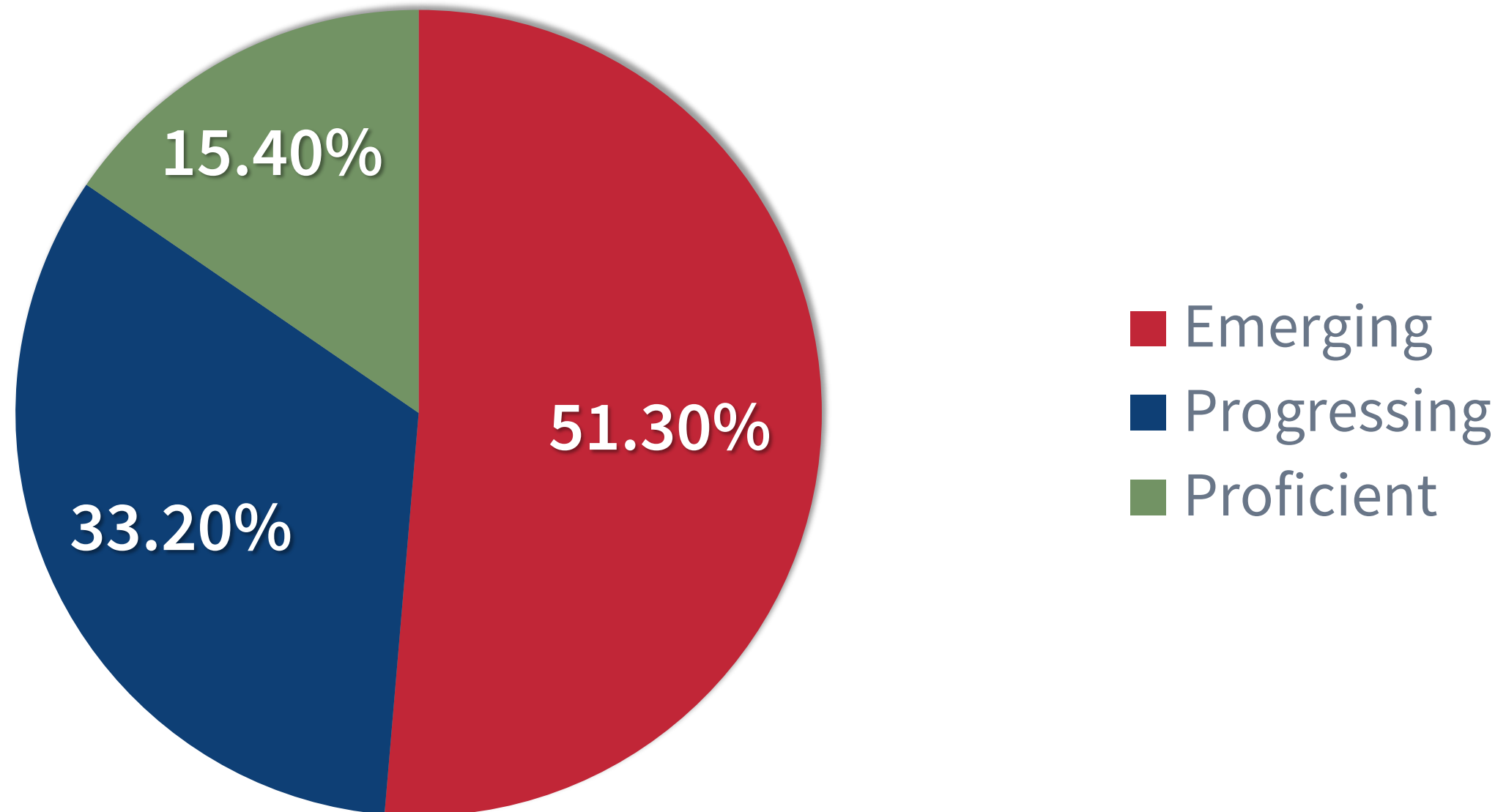


Overall Proficiency Determination

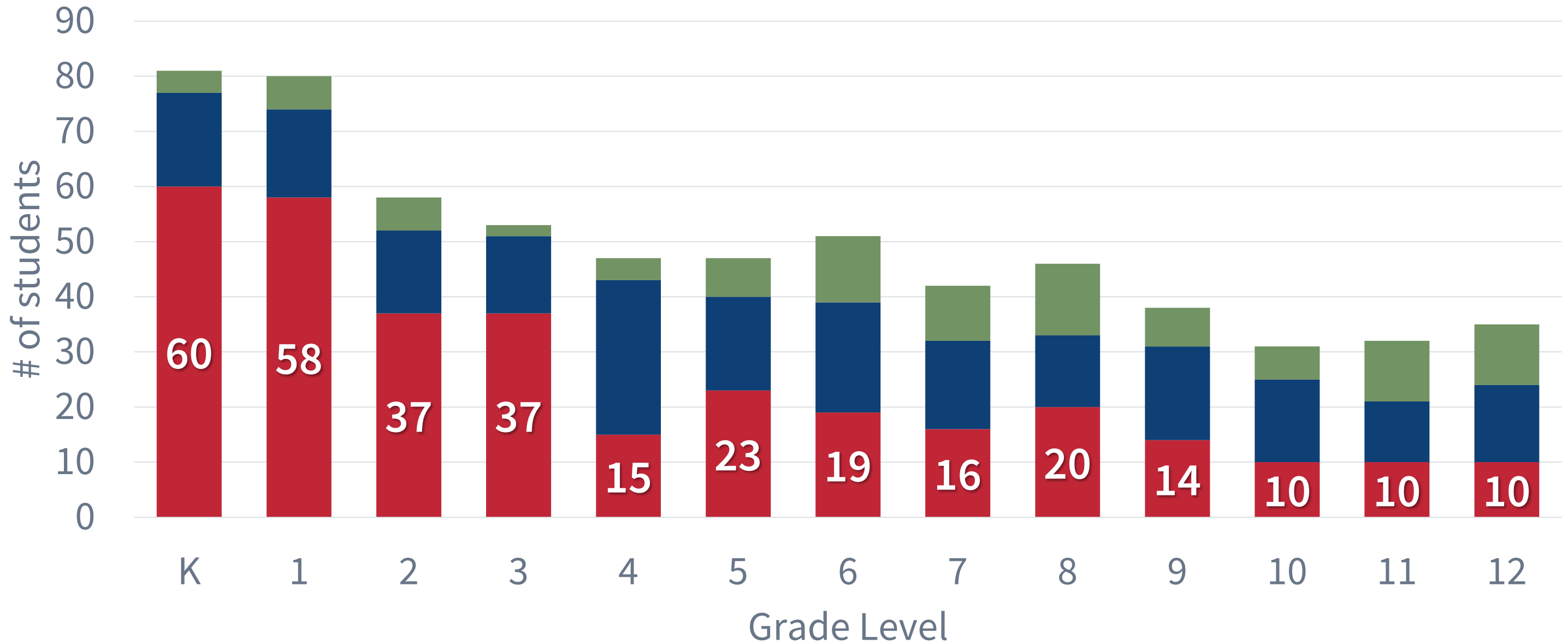


Statewide Alt-OELPA Results by Proficiency Determination, 2023

(Percentage of Students)



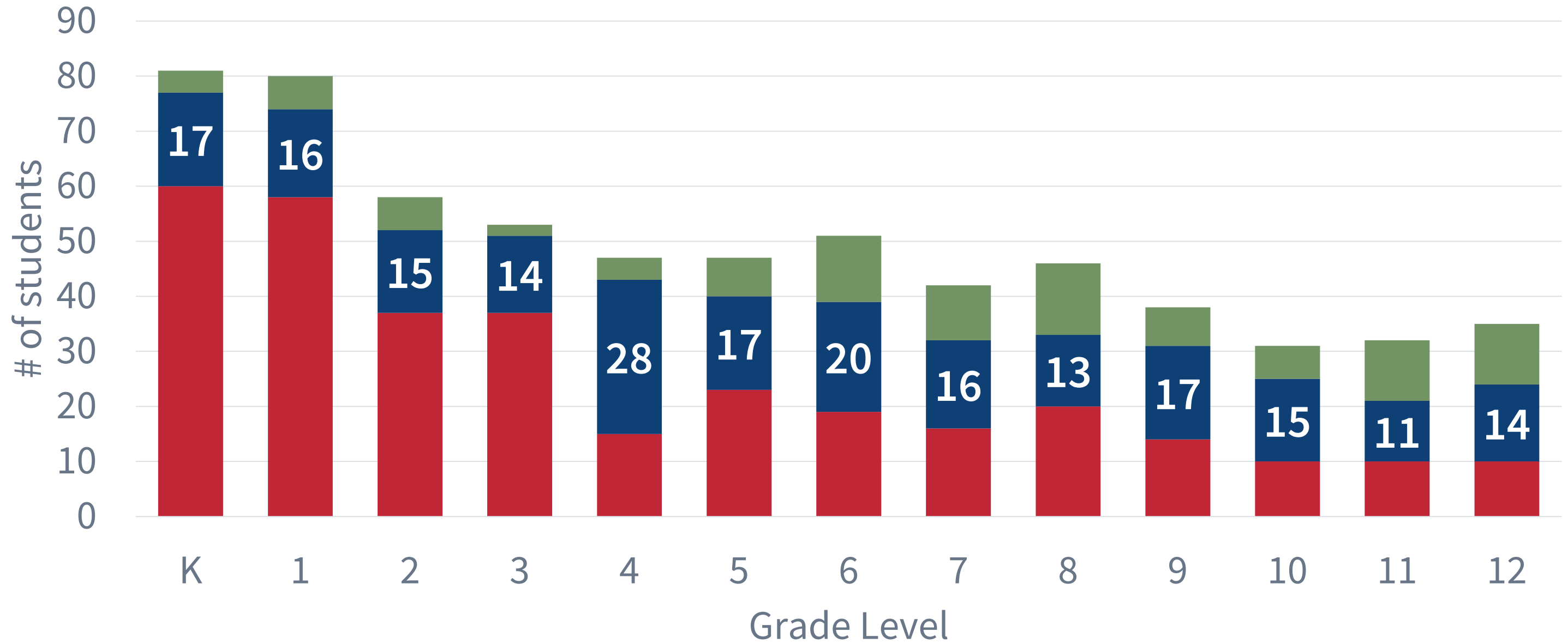
Statewide Alt-OELPA Overall Proficiency by Grade Level, 2023 - *Emerging*



Emerging Progressing Proficient



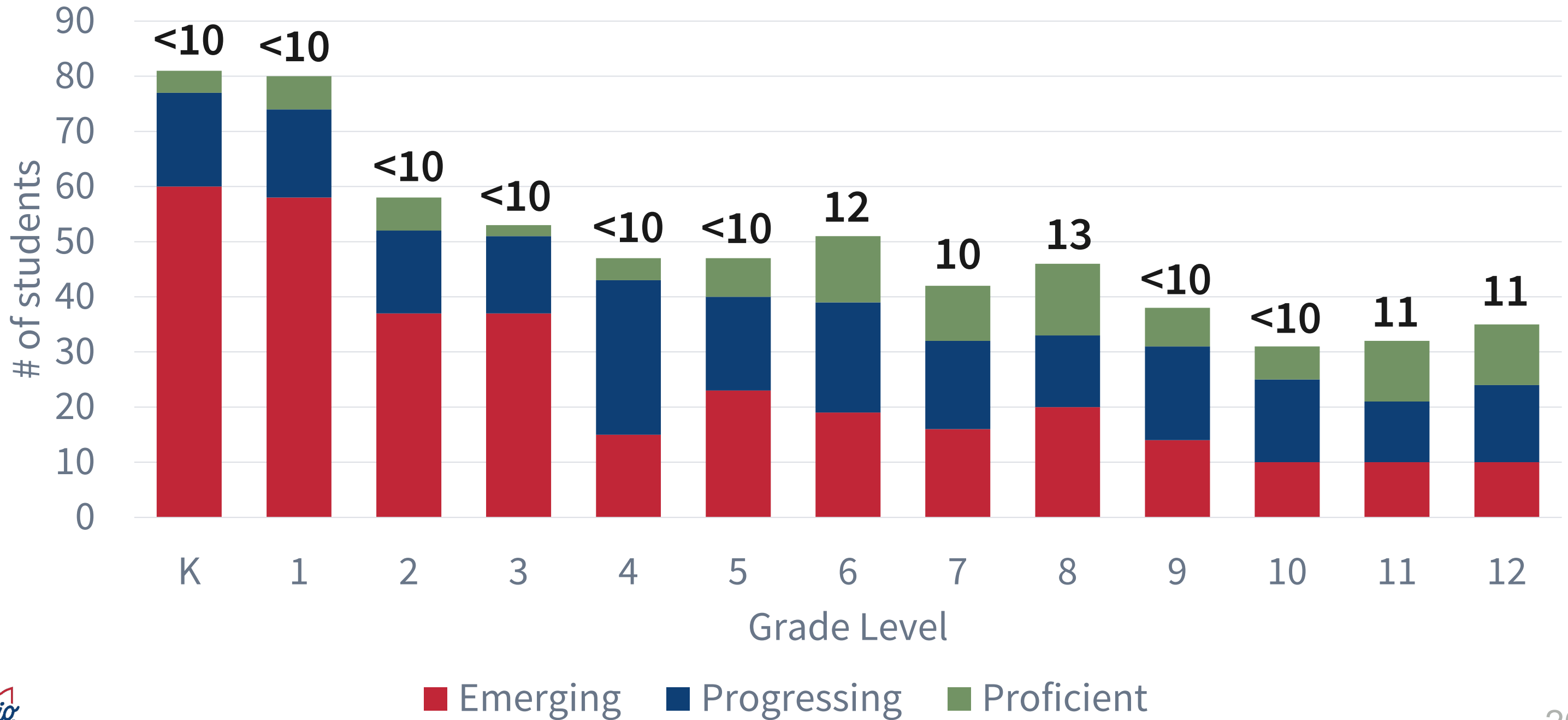
Statewide Alt-OELPA Overall Proficiency by Grade Level, 2023 - *Progressing*



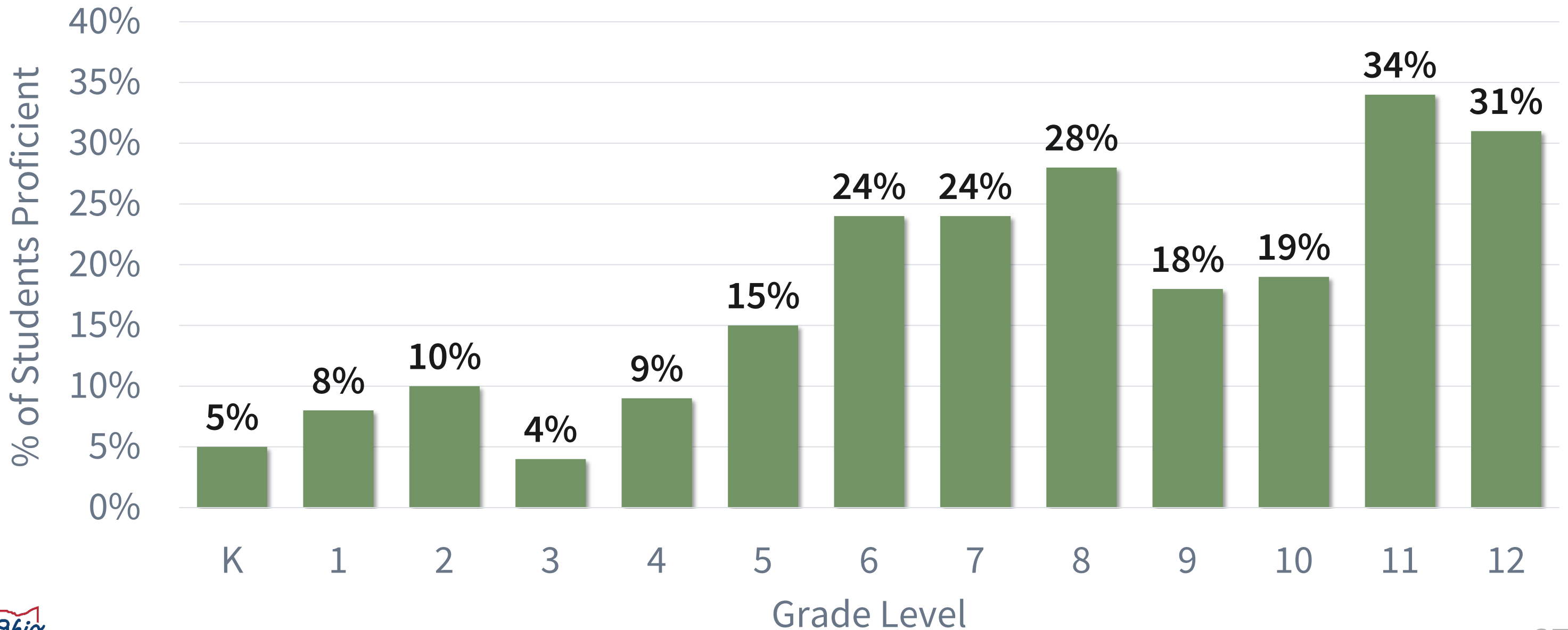
Emerging Progressing Proficient



Statewide Alt-OELPA Overall Proficiency by Grade Level, 2023 - *Proficient*



Statewide Alt-OELPA Proficiency Rates by Grade Level, 2023 (Percent proficient)

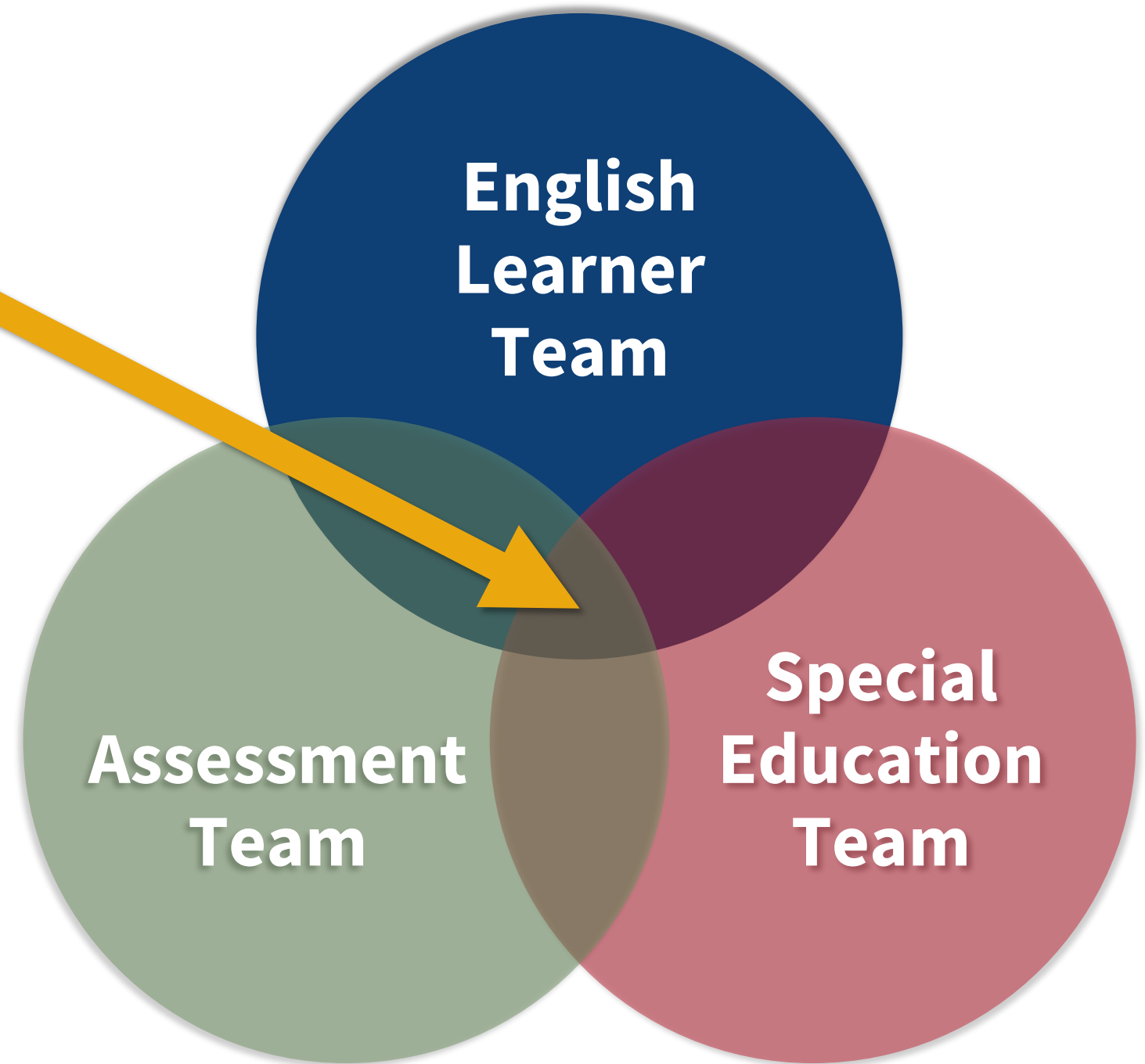


3

Preparing to Administer the Alt-OELPA

Alt-OELPA Requires Collaboration and Communication

- ✓ Eligibility for Alt-OELPA
- ✓ Accessibility needs, especially accommodations and domain exemptions
- ✓ Configuring test settings in TIDE
- ✓ Updating student information systems and applying the results



Important Dates

OELPA and Alt-OELPA Test Window

Jan. 29–March 22, 2024

-
- ✓ Administer the four domain tests any day during the test window
 - ✓ Alt-OELPA scores scheduled to be reported in May 2024



Domain Exemption for Alt-OELPA

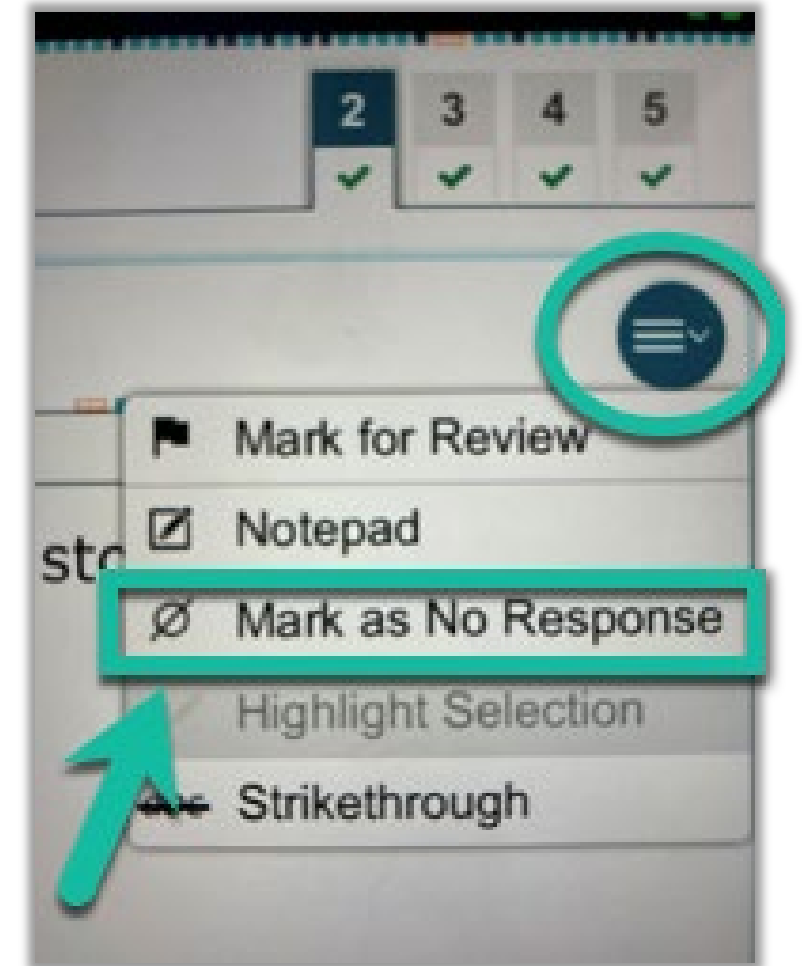
- Three required criteria:
 1. Student has documented disability;
 2. Student cannot access the domain, even with available accommodations; and
 3. IEP/504 team establishes need for exemption in consultation with English learner specialist
- Enter domain exemption(s) in TIDE **before** student starts any domain test.



IMPORTANT: Reconsider domain exemptions for Alt-OELPA. Do not simply carry over OELPA domain exemptions.

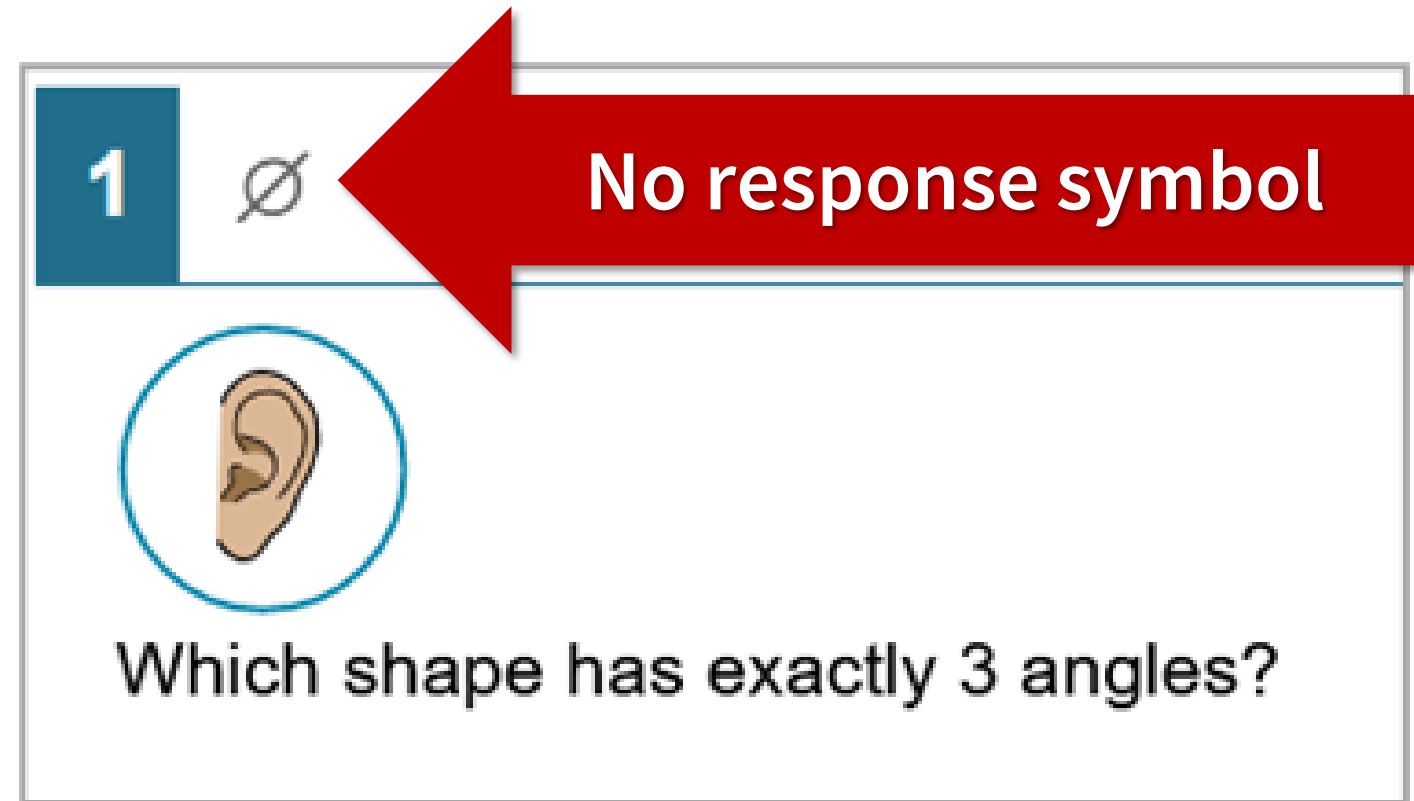
Applying the Alt-OELPA Early Stopping Rule

From the student's device, the test administrator marks the first four items as "No Response" by clicking the **Context Menu** button to access the **Mark as No Response** option.



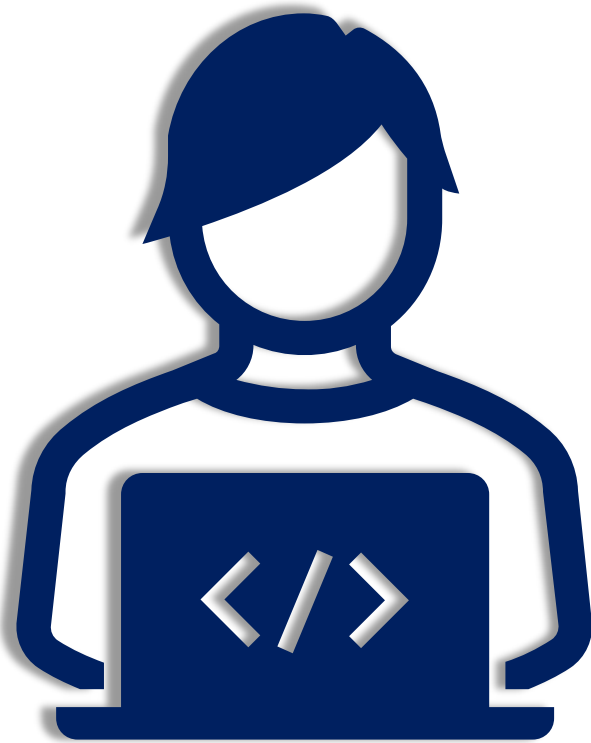
Confirming the Alt-OELPA Early Stopping Rule

This image shows what an Alt-OELPA item looks like once “Mark as No Response” is selected.



Refer to Appendix A of the [Alt-OELPA Test Administration Manual](#) for complete information.

Alt-OELPA Resources



1. [Alt-OELPA webpage](#)

2. [Alt-OELPA Resources page on portal](#)

- ✓ Test Administration Manual
- ✓ Participation Guidelines
- ✓ Accessibility and Accommodations Manual
- ✓ Links to Training Courses
- ✓ Tool Button Image and Description Sheet
- ✓ Practice Test Resources
- ✓ Translated Test Directions for Administration

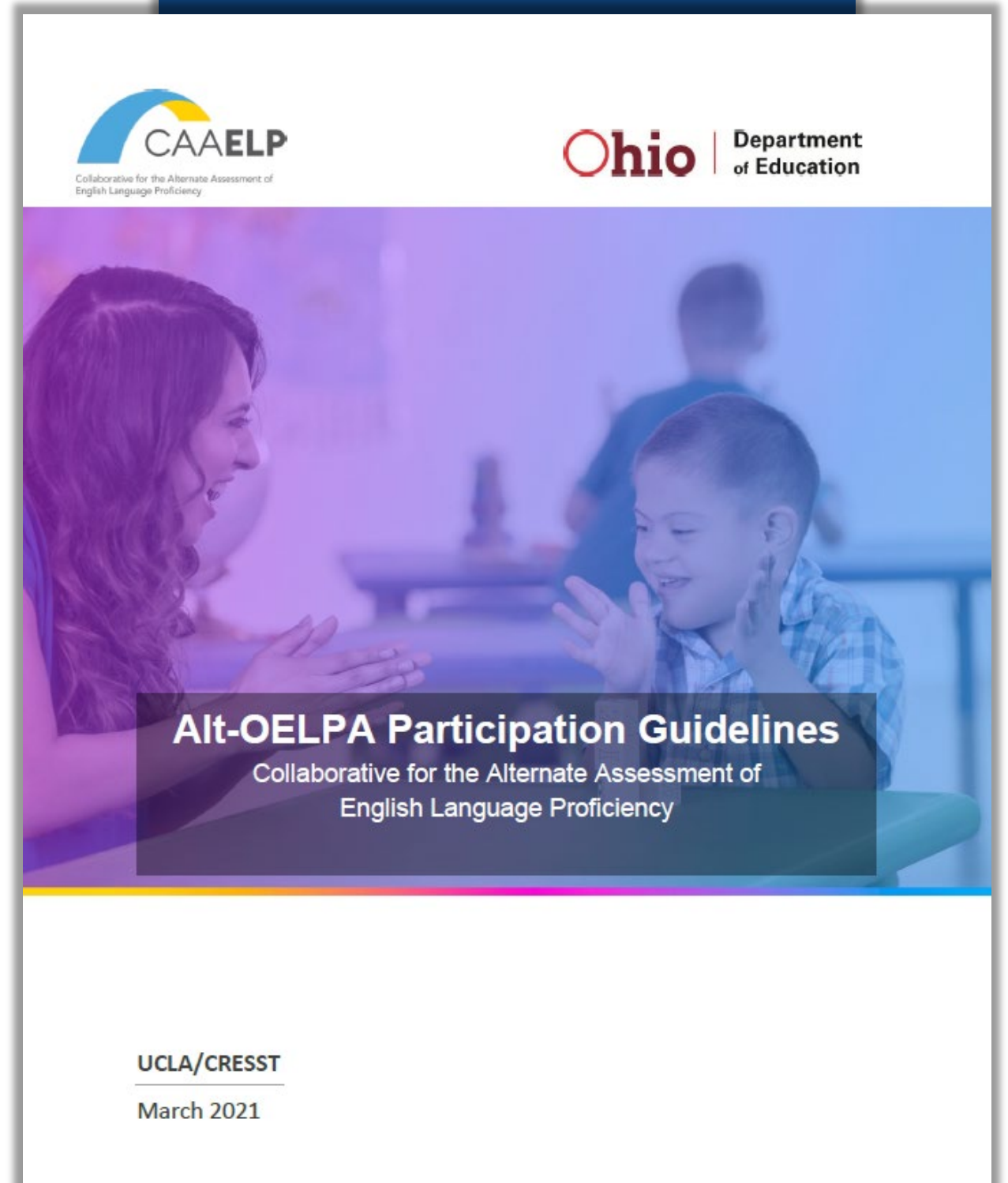
3. [Alt-OELPA Reporting Resources](#)

Individualized Education Program (IEP) Teams

Decide student participation based on the [Alt-OELPA Participation Guidelines](#).

Most English learners with disabilities will participate in the OELPA.

Regardless of the test, keep high expectations for English development.



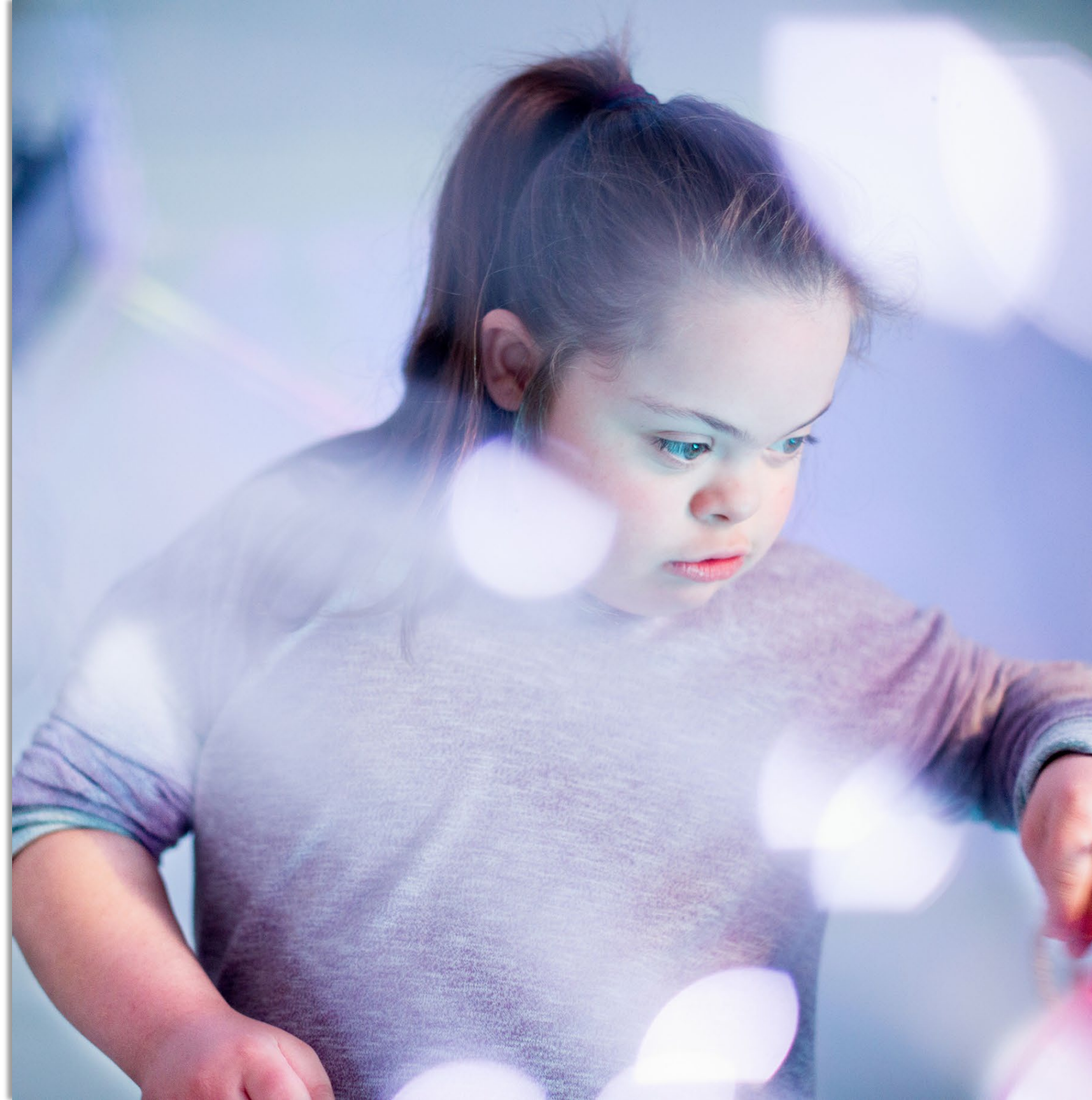
UCLA/CRESST

March 2021

Alt-OELPA Registration

IEP: Document student eligibility, Section 12-Testing Page and list accessibility needs.

TIDE: Pre-identify student for Alt-OELPA in TIDE and configure settings.



IEP Documentation

- ✓ Using [Individualized Education Program \(IEP\) Form \(PR-07\)](#)
- ✓ List OELPA or Alt-OELPA as “Other” area under Statewide Testing
- ✓ List accessibility needs for the test
 - [OELPA Accessibility Manual](#)
 - [Alt-OELPA Accessibility Manual](#)

12 STATEWIDE AND DISTRICT WIDE TESTING

Is the child participating in the Alternate Assessment for Students with Significant Cognitive Disabilities (AASCD)? YES NO

Click below for guidance in considering AASCD:
[Ohio's Alternate Assessment Participation Decision-Making Tool](#)

Accessibility on district and statewide tests

Will the child participate in district wide and statewide assessments with accommodations? YES NO

For each subject tested in the child's grade, choose the method of assessment below.
 If "With Accommodations" is chosen for any subject, provide a description of the accommodations for each subject in the right column.
 Alternate Assessment, if chosen, must apply to all tests taken.

1. DISTRICT TESTING (Note specific test or tests that student will be taking and any differences in allowable accommodations that may be test specific within the classroom across the district)

AREA	ASSESSMENT TITLE	DETAIL OF ACCOMMODATIONS
<input type="radio"/> ELA		
<input type="radio"/> Mathematics		
<input type="radio"/> Science		
<input type="radio"/> Social Studies		
<input type="radio"/> Other		

2. STATEWIDE TESTING (Note specific test or tests that student will be taking and any differences in allowable accommodations that may be test specific)

AREA	ASSESSMENT TITLE	DETAIL OF ACCOMMODATIONS
<input type="radio"/> ELA		
<input type="radio"/> Mathematics		
<input type="radio"/> Science		
<input type="radio"/> Social Studies		
<input checked="" type="radio"/> Other	Alt-OELPA	[Enter accommodations the IEP team determines are necessary. Refer to the Alt-OELPA Accessibility and Accommodations Manual on the test portal.]



Training Courses for Test Coordinators and Test Administrators



Created by ELPA21

Self-paced, online courses

Complete courses before testing,
beginning Dec. 11, 2024

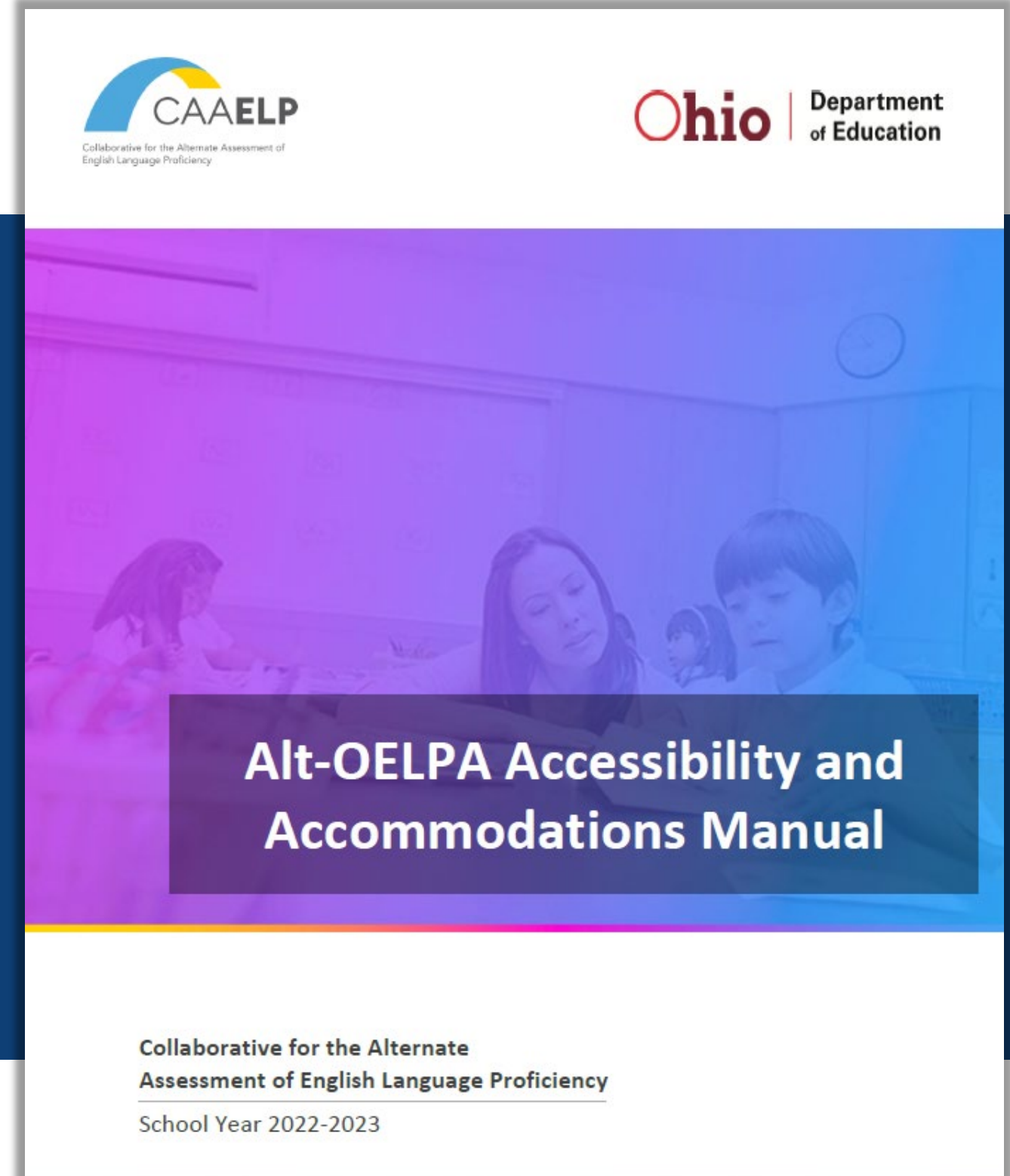
Register using a
[Google email account](#)

Register using a
[non-Google email account](#)

Questions? Contact elpa21training@aelearningonline.org

Alt-OELPA Accessibility and Accommodations Manual

- ✓ **Section 1:** Introduction
- ✓ **Section 2:** Participation Criteria
- ✓ **Section 3:** Embedded Features
- ✓ **Section 4:** Non-embedded Features
- ✓ **Appendix A:** Student Examples of Applying the Accessibility Model
- ✓ **Appendix B:** Template for Applying Accessibility Considerations



Read Aloud on the Alt-OELPA

Grades K-1

Test administrator is instructed to read items aloud to the student

Grades 2-3

Test administrator reads items aloud if read aloud is a part of instruction

Grades 4-12

Test administrator may read items aloud as a non-embedded designated support

Use the Personal Needs Profile tool from the [Alt-OELPA Accessibility and Accommodations Manual](#) to communicate accessibility needs among educator teams.

Alt-OELPA Sample Items

SYSTEM



Practice Test

Become familiar with the testing system and types of questions on the operational tests.

 [Ohio's Practice Test site](#)

On the Practice Test Site
on the test portal

Six grade bands:
K, 1, 2-3, 4-5, 6-8, 9-12

2-3 items per domain test

Check compatibility of
assistive technology

Become familiar with
testing interface

Use [Alt-OELPA Practice Test: TA
Directions & Scoring Rubrics Booklets](#)

Test Administrator Directions and Scoring Rubrics Booklets



DTC or DA* downloads booklets from *General Resources* in TIDE.



DTC or DA distributes the booklets via the *Secure File Center*.



Test administrators need booklets during test administration.



Booklets contain item-specific directions and script.



Booklets contain rubrics to score speaking and writing items.



Delete or destroy booklets after test administration.

General Resources and Secure File Center in TIDE

The screenshot displays the TIDE (Test Information Delivery Environment) interface. At the top left, there is a logo for Ohio Department of Education and the text 'TIDE'. On the top right, there is a search bar with the text 'Student ID/User Email' and a magnifying glass icon. Below the search bar, there are three main navigation sections: 'Preparing for Testing' (orange background), 'Administering Tests' (teal background), and 'After Testing' (light blue background). Each section contains several menu items with dropdown arrows. A red box highlights the 'General Resources' and 'Secure File Center' links in the top right navigation area. A yellow banner at the bottom right contains the text 'Booklets scheduled to be posted on Jan. 25'.

Ohio Department of Education | TIDE

General Resources | Secure File Center | Help | David Brauer

Student ID/User Email

Preparing for Testing

- Users
- Student Information
- Score Reporting Label Requests
- Test Settings and Tools
- Rosters

Administering Tests

- Print Test Tickets
- Monitoring Test Progress
- Score Reports Shipping Information
- Test Status Requests

After Testing

- Data Cleanup

Booklets scheduled to be posted on Jan. 25

Alt-OELPA Order of Domain Test Administration

Alt-OELPA domain tests should be administered in this order:



Alt-OELPA Forms A-D

Four randomly assigned test forms, A-D

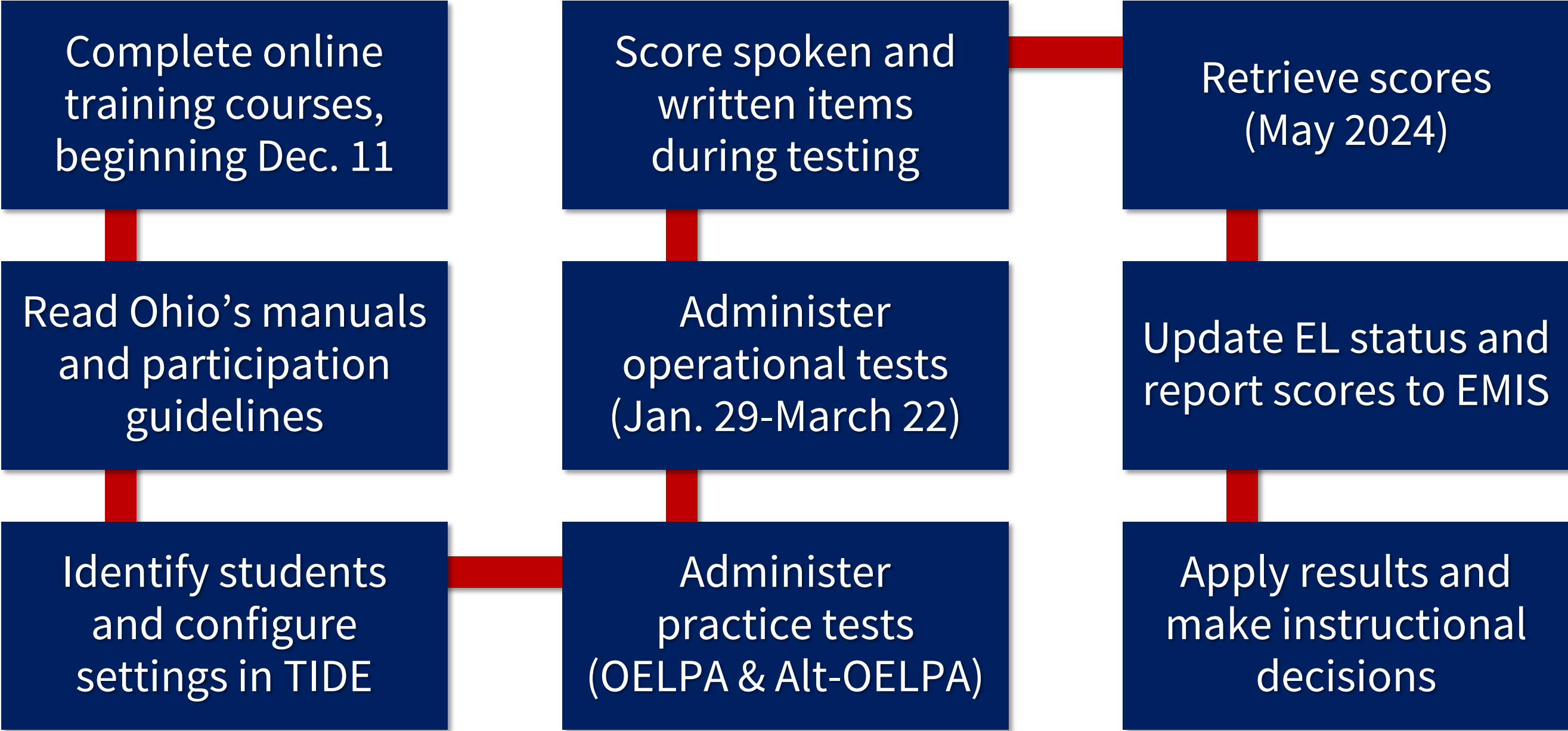
Form letter appears at 1st domain test

Same test form for all domains

Refer to corresponding test form in the
TA Directions and Scoring Rubrics Booklets



Alt-OELPA Sequence



Alt-OELPA Contacts


David
Brauer

 (614) 387-7586

Katelynn
Crow

 (614) 995-4144

Ohio Help
Desk

 (877) 231-7809



firstname.lastname@education.ohio.gov or OHHelpDesk@cambiumassessment.com

QUESTIONS?

EDUCATION.OHIO.GOV



**Department of
Education &
Workforce**



Evaluation & Certificates of Attendance

Evaluation

- ✓ Please complete the evaluation:

<https://tinyurl.com/2afhep2p>

Certificates of Attendance

- ✓ Complete and submit the evaluation
- ✓ Questions 7-11 required for certificate

QR Code to
Post-webinar Evaluation



Webinar Recording and Presentation Slides

QR Code to
Alt-OELPA Webinar
Resources



- ✓ Presentation slides are available on Ohio's English Language Proficiency Tests portal.

<https://tinyurl.com/2nytkztc>

- ✓ The recording will be posted on the Alt-OELPA webinars page of the test portal.

Thank you for attending
the 2024 Alt-OELPA webinar!



**Department of
Education &
Workforce**





**Department of
Education &
Workforce**

EDUCATION.OHIO.GOV



**THE HEART
OF IT ALL™**

Ohio.org

OHIO.ORG

